



TigerHub Family Ethernet Hubs

Workgroup Connectivity For All Media

- ◆ Plug and Play,
No Configuration Required
- ◆ Twisted-Pair, Coax and
Fiber Models
- ◆ Desktop Models and Rack-
Mountable, Segmentable Models
- ◆ Small Footprint, Compact
- ◆ Exceptional Value and Reliability

SMC's TigerHub™ family provides connectivity for a variety of Ethernet wiring environments and multi-port repeater applications, from basic workgroups to remote branch offices. These low-cost, economical hubs offer plug and play simplicity for twisted-pair, thin coax and fiber networks. There are desktop versions for small workgroups and rack-mountable, segmentable versions that can boost the performance of larger, high-traffic workgroups. And, each hub has one or two additional ports for backbone or mixed media connectivity.

The 6- and 12-port 10BASE-T models are ideal for building cost-effective workgroups using unshielded twisted-pair wiring in central or branch offices.

The 3- and 6-port thin coax models are ideal for extending existing thin coax LANs, and also for improving the manageability and reliability of a thin coax network.

The 6-port fiber model is ideal for linking wiring closets in a building, or multiple buildings in a campus environment.

SMC's TigerHub family provides the flexibility to quickly and easily expand your network, plus the proven reliability you expect from SMC. And, they're all ideal companions to SMC's award-winning Ethernet adapters.



SMC UNITY

SMC®



Desktop TigerHubs for Small Workgroups



TigerHub TP6

6 10BASE-T Ports, 1 AUI Port



TigerHub TP6B

6 10BASE-T Ports, 1 Thin Coax Port



TigerHub CX3

3 Thin Coax Ports, 1 AUI Port

- ◆ Low profile and small footprint
- ◆ Comprehensive array of easy-to-read diagnostic and status LEDs

With their small footprint and low profile, these TigerHubs can be placed on any flat surface or easily mounted on a wall. There are three desktop models: two 6-port 10BASE-T hubs and one 3-port thin coax hub. For added flexibility, each hub contains an AUI or BNC port to simplify connectivity to a backbone or mixed media LAN.

Features/Benefits

Versatile

- ◆ Twisted-pair and thin coax models
- ◆ One additional port (AUI or BNC) for easy backbone or mixed media connectivity
- ◆ Table- or wall-mount chassis design

Easy to Install and Use

- ◆ No configuration required, just plug and play!
- ◆ Extended distance support on thin coax and 10BASE-T segments
- ◆ Internal transmit/receive crossover on all twisted-pair ports for straight-through wiring
- ◆ Automatic polarity detection and correction on twisted-pair ports
- ◆ Easy-to-read diagnostic LEDs indicating hub and port status
- ◆ Automatic port partitioning and reconnection isolates problem until faults are corrected
- ◆ Very small in size (1.2 in. high) and light in weight

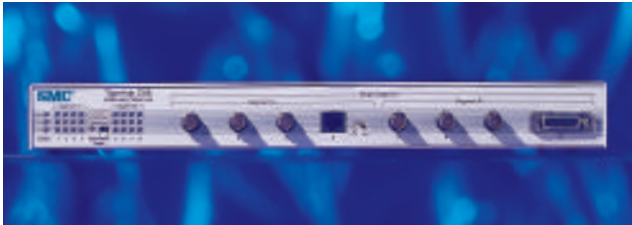
Exceptionally Reliable

- ◆ Smart squelch digital noise filter on twisted-pair ports for reliable communication over varying line quality
- ◆ Based on SMC's proven and reliability-tested silicon
- ◆ Three-year warranty
- ◆ Free technical assistance



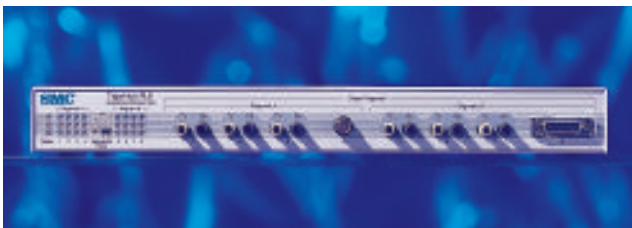
TigerHub TP12

12 10BASE-T Ports, 1 AUI Port, 1 Thin Coax Port



TigerHub CX6

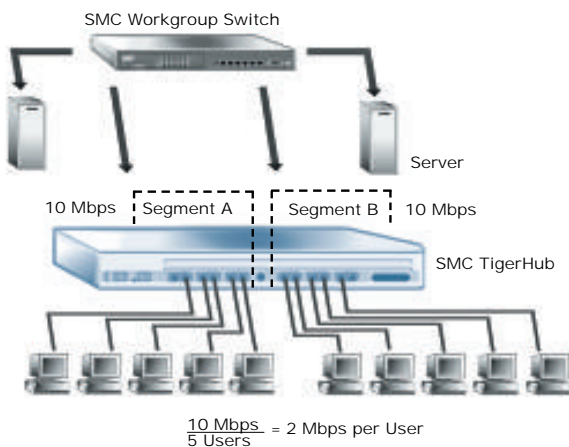
6 Thin Coax Ports, 1 AUI Port, 1 10BASE-T Port



TigerHub FL6

6 10BASE-FL Ports, 1 AUI Port, 1 Thin Coax Port

- ◆ Segmentation doubles average available bandwidth per node
- ◆ Built-in BNC port for easy connection to thin coax backbone for TP12 and FL6 models
- ◆ Comprehensive array of easy-to-read diagnostic and status LEDs



Rack-Mountable, Segmentable Hubs for Large Workgroups

Double your bandwidth with SMC's segmentable TigerHubs! These rack-mountable hubs can be segmented into two 10 Mbps domains for a total of 20 Mbps of aggregate bandwidth. There are three segmentable TigerHub models: a 12-port 10BASE-T hub, a 6-port thin coax hub, and a 6-port fiber hub. Each hub has two additional ports for easy connection to a larger, distributed topology network. These plug and play hubs can be rack- or wall-mounted, or placed on any flat surface. Each hub comes with mounting brackets for quick installation in a standard 19-inch rack.

Features/Benefits

Versatile

- ◆ Segmentable into two 10 Mbps collision domains for 20 Mbps aggregate bandwidth
- ◆ Two additional ports (AUI and either BNC or RJ-45) for easy backbone and mixed media connectivity
- ◆ Rack-, table- or wall-mount chassis design

Easy to Install and Use

- ◆ No configuration required, just plug and play!
- ◆ Extended distance support on thin coax and 10BASE-T segments
- ◆ Support standard, straight-through wiring between the TigerHub and PC on all twisted-pair ports, and between a pair of cascaded hubs on uplink port
- ◆ Automatic polarity detection and correction on twisted-pair ports
- ◆ Easy-to-read diagnostic LEDs indicating hub and port status
- ◆ Automatic port partitioning and reconnection isolates problem until faults are corrected
- ◆ Internal, auto-ranging power supply for worldwide operation
- ◆ Low profile (1.75 in. = 1 unit high) for maximum density in equipment rack

Exceptionally Reliable

- ◆ Smart squelch digital noise filter on twisted-pair ports for reliable communication over varying line quality
- ◆ Based on SMC's proven and reliability-tested silicon
- ◆ Three-year warranty
- ◆ Free technical assistance



SMC UNITY

Adapters
Workgroup Hubs
Workgroup Switches

SMC Offices Worldwide
For information, call or fax:

◆ SMC—Headquarters
Hauppauge, NY
Phones: (800) SMC-4-YOU
(516) 435-6000
Fax: (516) 273-1803

◆ SMC—Canada
Oakville, Ontario, CANADA
Phone: (800) SMC-4-YOU

◆ SMC—Latin America
Miami, FLORIDA
Phone: (305) 264-7657
Fax: (305) 264-8321

◆ SMC—Mexico
Mexico City, MEXICO
Phone/Fax: 525-671-0468

◆ SMC—France
St. Germain-En-Laye
FRANCE
Phone: 33 (1) 30.87.42.42
Fax: 33 (1) 30.61.41.34

◆ SMC—Europe
Bracknell, Berkshire, UK
Phone: 44 (0) 1344 418800
Fax: 44 (0) 1344 418828

◆ SMC—Northern Europe
Bracknell, Berkshire, UK
Phone: 44 (0) 1344 418820
Fax: 44 (0) 1344 418826

◆ SMC GmbH—
Central Europe
München, GERMANY
Phone: 49 (89) 92861-0
Fax: 49 (89) 92861-230

◆ SMC GmbH—
E. Europe/Middle East
München, GERMANY
Phone: 49 (89) 92861-142
Fax: 49 (89) 9101934

◆ SMC—Australia
Sydney, AUSTRALIA
Phone: 61.2.238.2206
Fax: 61.2.238.2220
Melbourne, AUSTRALIA
Phone: 61.3.653.9461
Fax: 61.3.653.9548

◆ SMC—South Africa
Sandton, Johannesburg
SOUTH AFRICA
Phone: 27 (0) 11 784-0414
Fax: 27 (0) 11 784-0519

◆ SMC—Asia
SINGAPORE
Phone: 65-320-8391
Fax: 65-320-8359

◆ TMC—Japan
Tokyo, JAPAN
Phone: 81 (3) 57212271
Fax: 81 (3) 57212270

◆ SMC—EliteFax™
Fax-on-Demand System
US/Canada: (800) SMC-8329
Elsewhere: (516) 435-6107

◆ World Wide Web
<http://www.smc.com/>

SMC[®]
STANDARD
MICROSYSTEMS
CORPORATION

TigerHub Family

Ethernet Hubs

10BASE-T, Thin Coax and Fiber Models

Specifications

Rack-mount Hubs

TP12 (SMC3212TC)

Ports

12 RJ-45, 1 BNC, 1 AUI

Diagnostic LEDs

46

AC Input Power

35 W maximum
15 W typical (all ports in use)

CX6 (SMC3206BC)

Ports

6 BNC, 1 RJ-45, 1 AUI

Diagnostic LEDs

28

AC Input Power

40 W maximum
22 W typical (all ports in use)

FL6 (SMC3206FC)

Ports

6 ST, 1 BNC, 1 AUI

Diagnostic LEDs

28

AC Input Power

40 W maximum
27 W typical (all ports in use)

All Rack-mount Hubs

Number of Segments

2

Power Supply

Internal, auto-ranging
transformer
100-240 V, 50-60 Hz

Size

1.75 in. H (4.4 cm)
15.1 in. W (38.4 cm)
9.1 in. D (23.1 cm)

Weight

4.05 lb. (1.8 kg)

Desktop Hubs

TP6 (SMC3206TA)

Ports

6 RJ-45, 1 AUI

Diagnostic LEDs

16

AC Input Power

24 W maximum
17 W typical (all ports in use)

Power Supply

external AC transformer
100-120 V or 200-240 V
50-60 Hz

TP6B (SMC3206TB)

Ports

6 RJ-45, 1 BNC

Diagnostic LEDs

16

AC Input Power

24 W maximum
16 W typical (all ports in use)

Power Supply

external AC transformer
100-120 V or 200-240 V
50-60 Hz

CX3 (SMC3203BA)

Ports

3 BNC, 1 AUI

Diagnostic LEDs

10

AC Input Power

22.5 W maximum
15 W typical (all ports in use)

Power Supply

external DC
100-250 V, 50-60 Hz

All Desktop Hubs

Number of Segments

1

Size

1.2 in. H (3.05 cm)
7.6 in. W (19.3 cm)
5.8 in. D (14.76 cm)

Weight

1.2 lb. (0.54 kg)

All TigerHubs

Temperature

Operating
0° to 45° C (32° to 113° F)

Storage

0° to 85° C (32° to 185° F)

Humidity, Non-condensing

Operating
0% to 90%

Storage

0% to 95%

Ethernet Standards

IEEE 802.3
ISO/IEC 8802-3

Compliances

CE Mark
Safety

UL 1950
CSA 22.2 No. 950
EN60950 (TÜV)

Emissions

FCC Class A
EN55022 (CISPR 22)

Class A

VCCI Class 1
CDOC Class A

Immunity

EN50082-1

Warranty

3 years

Product	Order Number*	Description
TigerHub	SMC3212TC	10BASE-T Hub with 12 RJ-45 Ports, 1 BNC Port, 1 AUI Port
	SMC3206BC	Thin Coax Hub with 6 BNC Ports, 1 RJ-45 Port, 1 AUI Port
	SMC3206FC	Fiber Hub with 6 ST Ports, 1 BNC Port, 1 AUI Port
	SMC3206TA	10BASE-T Hub with 6 RJ-45 Ports, 1 AUI Port
	SMC3206TB	10BASE-T Hub with 6 RJ-45 Ports, 1 BNC Port
	SMC3203BA	Thin Coax Hub with 3 BNC Ports, 1 AUI Port

* Includes US line cord. For UK line cord, add "UK" after order number; and for Continental Europe line cord, add "EUR."